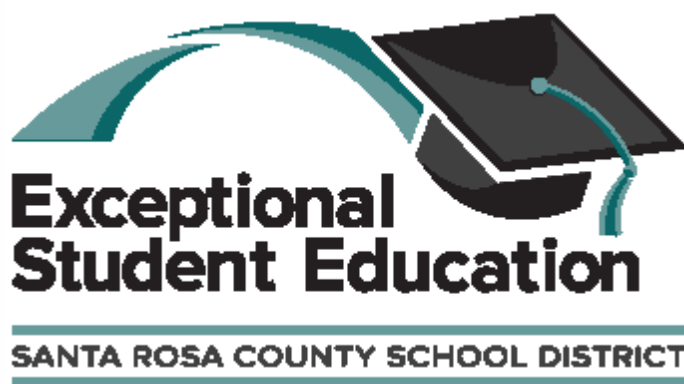


IN THE KNOW WITH ESE



National Disability Employment Month

In recognition of the important role people with disabilities play in a diverse and inclusive American workforce, the theme for National Disability Employment Awareness Month (NDEAM) 2022 will be "Disability: Part of the Equity Equation." Observed annually in October, NDEAM celebrates the contributions of America's workers with disabilities past and present and showcases supportive, inclusive employment policies and practices

The following website has ideas to incorporate into the curriculum:

<http://teambuilding.com/blog/national-disability-employment-awareness-month>

Staffing Shortages and 1:1's

As we all are well aware of, the nation is experiencing teacher and staff shortages. This does not elevate the school's and district's legal obligation to fulfill the services noted in the IEP. If a student has a 1:1 listed in their IEP, and there isn't any applicants, the school must fill that vacancy from within until one can be hired. If necessary, multiple individuals can serve as the 1:1 however, it must be documented. School based administrators will need to ensure that a list of who served as the 1:1 and what dates and/or time they served is documented incase there are any questions.



"I wish for a world that views disability, mental or physical, not as a hindrance but as unique attributes that can be seen as powerful assets if given the right opportunities" - Oliver Sacks

Changes to Developmentally Delayed (DD) Eligibility

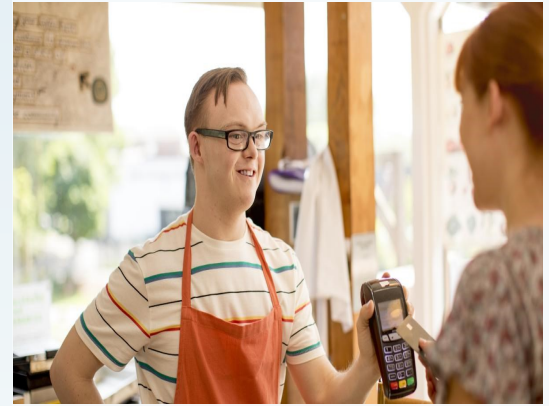
Effective July 1, 2022 the age range for eligibility of DD expanded to allow students to remain eligible for DD

Through age nine or through the conclusion of the second grade, whichever comes first. The district has some outstanding questions regarding specifics of the rule change and is seeking additional information from the FLDOE. We will pass along more information as we receive it.

Child Find and Parent Requested Evaluations

As a district we are required to identify students who are potentially eligible for services under IDEA. Most often, this occurs after a developmental screener is completed for students from three years old to kindergarten or after a student in grades K-12 has gone completely through the MTSS process and does not make adequate growth. This MTSS data is exceptionally important, and at times required, to make a determination of eligibility or ineligibility. At times, such as when a student has a medical diagnosis and there may be a significant education impact, the MTSS process can occur concurrently with the Initial Evaluation within the 60 day timeline. In these unique situations, the lack of MTSS process should not hold back the evaluation. Please consult with the respective Program Facilitator or ESE Leadership team member for guidance on situations such as this.

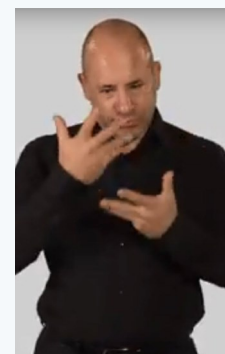
If a parent requests an Initial Evaluation or Reevaluation, it cannot be delayed or denied because of a lack of MTSS interventions. In this situation, it is appropriate for a school administrator or counselor to inform the parent of the MTSS purpose and process. This may include advising them that the goal of MTSS is to address the student's needs in the least restrictive level of intervention, often students respond very well to tier 2 and tier 3 interventions, and many students do not need ESE services. Also, the parent can be notified that lack of MTSS interventions can impede eligibility for some, but not all, exceptionalities such as a Learning Disability. If, after informing the parent about MTSS, he/she is still requesting an ESE evaluation, the process should be moved forward and MTSS should be implemented concurrently with the evaluation.



NOTE: Please ensure your CPI certified staff who need a refresher course sign up!

October is National Blindness Awareness Month.

Congratulations to OBE for implementing White Cane Day.



SCHOOL HIGHLIGHTS FOR NATIONAL DISABILITY AWARENESS Month.

- **DIS**— their Social Thinking and CBSA classrooms are hosting a disability workshop for all students and staff ! Their stations focused giving everyone the experience of how functioning with a disability really is. Examples included physical impairment station where students put a sock on their hands and tried to button a shirt.
- OBE hosted the White Cane Day and provided stations that included Reading/Writing Braille Station—Crack the Code, A Blindfold Station where student attempted to make a PBJ sandwich and put a straw in a juice box and a Mystery Box Station where student had to feel and label what they thought the object was.

White Cane Safety Day is a national observance in the US, celebrated on October 15 since 1964. The date is set aside to celebrate the achievements of people who are blind or visually impaired and the important symbol of blindness and tool of independence, the white cane.



SOCIAL THINKING

Social Thinking Highlight Teachers:

Every month several social thinking teachers will be recognized for the outstanding job they are doing in the classroom! This month a huge congrats goes out to the following:

Autumn Rose—EME
Rebecca Webster—WBM
Velda Wilson—MHS
April Lundquist—KMS

Social Thinking News

UPCOMING TRAININGS:

October 28th – ESE: SB1108: ESE: EFFECTIVE STRATEGIES FOR STUDENTS WITH ANXIETY RELATED BEHAVIORS

Section #: 37441

Location: Virtual- Zoom Platform (Zoom Link will be provided closer to training date)

Time: 8:30-3:00

Participants: General Education Teachers, ESE Teachers, Administrators, General Education and ESE Paraprofessionals, SLP's, OT's, PT's

Social Express:

Description: The Social Express is **engaging, educational software for children and young adults with social learning challenges**. The software is designed to teach users how to think about and manage social situations, helping them to develop meaningful social relationships and succeed in life.



Santa Rosa County has a district wide license.

Contact Celeste Rivenbark RivenbarkC@santarosa.k12.fl.us to set up a teacher account.

Recorded Training Link: <https://youtu.be/kOAnfxO9Uxs>

Gifted Information for the 2022-2023 School Year!

Professional Development for all Gifted Teachers plus one additional teacher from each school on Wednesday, October 12, 2022 from 8:00 to 3:00 at the Russell Center. Subs will be paid for by the ESE Department from the Gifted Funds.

Lisa Van Gemert, "The Gifted Guru" will present "Apart & Away: Differentiation in the Real World Classroom"

Gifted teachers that attends this workshop must ensure their gifted students are served typically served on this date, are served on a different day this week due to FTE.

EXCITING NEWS FROM THE ESE DEPARTMENT

I have some exciting news to share about upcoming events that the Exceptional Student Education department will be hosting for the 2022-2023 school year. The ESE Family Connections is taking the place of our former content delivery Blended Café'. With the ESE Family Connections, we will schedule podcasts along with some short videos and share them to the district ESE page to allow you as a partner to interact with and view this information. The vision for ESE Family Connections is to help families navigate the world of ESE and Individual Education Plans (IEPs) as it relates to Santa Rosa County School District.

Our first ESE Podcast release date is October 18, 2022. Please share with your families.

SAVE THE DATE

